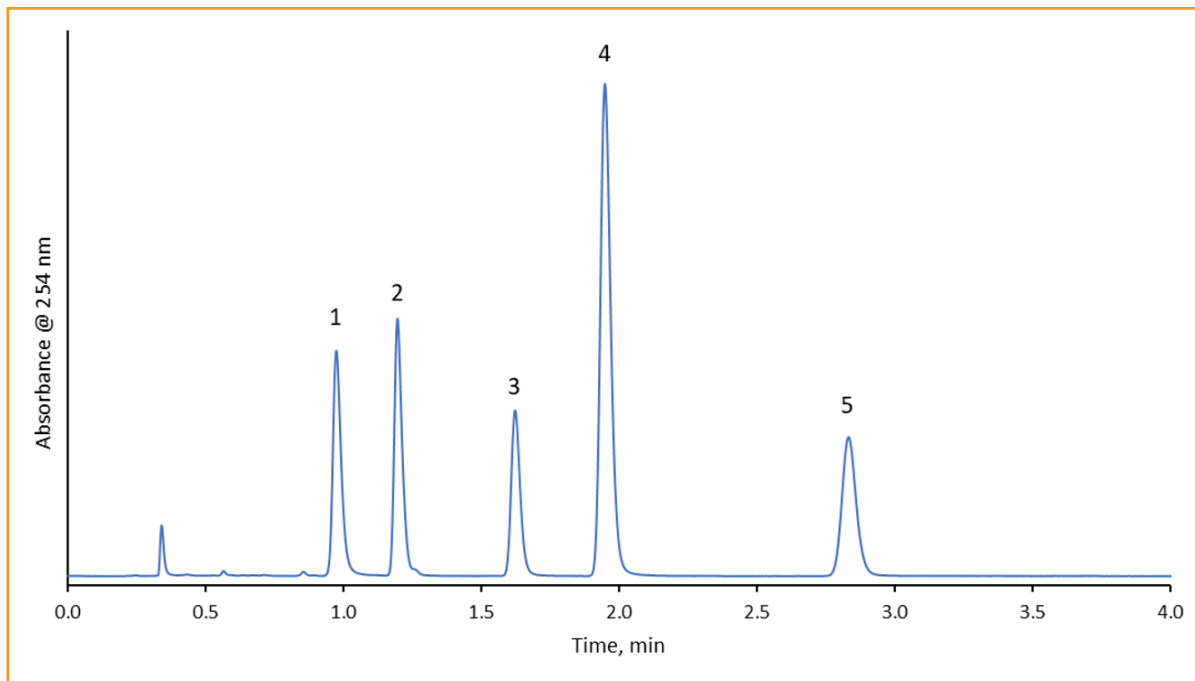




## Separation of Antidepressants on HALO® Elevate

368



### TEST CONDITIONS:

Column: HALO 120 Å ELV C18, 2.7  $\mu\text{m}$ , 2.1 x 100 mm  
 Part Number: 92272-602  
 Mobile Phase A: 10mM Ammonium Bicarbonate, pH:10  
 Mobile Phase B: Acetonitrile  
 Isocratic: 60% B  
 Flow Rate: 0.5 mL/min  
 Back Pressure: 260 bar  
 Temperature: 35 °C  
 Detection: UV/PDA, 254 nm  
 Injection Volume: 0.2  $\mu\text{L}$   
 LC System: Shimadzu Nexera X2

### PEAK IDENTITIES:

1. Nortriptyline
2. Doxepin
3. Imipramine
4. Amitriptyline
5. Trimipramine

Tricyclic antidepressants (TCAs) are a class of drugs primarily used to manage depression. A separation of antidepressants is achieved under high pH conditions using a HALO® Elevate C18 column. Excellent peak shape and selectivity is achieved in under 3 minutes.